

Secure Sleeve



The Secure Sleeve is a series of single-use media sleeves used in the data center environment to house small media such as SD cards, USB drives and CF drives for media removal or replacement purposes (ie. break/fix or decommissioning). The sleeves are all the same size, which facilitates UPC scanning and transport via conveyor belt. It also secures media during transit.

The user simply inserts the old media into the sleeve, locking it into place and at the same time pushes the new media out for replacement (if new media has been placed into the sleeve prior).

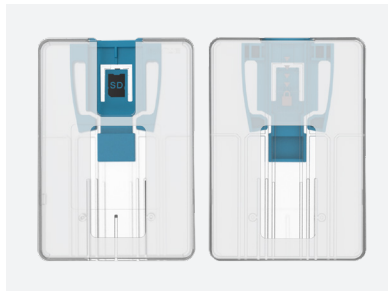
PRODUCT DETAILS

Brand/Trademark:	InVue
Product Name:	Secure Sleeve
Regulatory Model Number:	DDSLV
Default HS Code:	3926.90.9985
Electrical Ratings (Power):	Input/Output: 5V --- 0.5A (USB Version Only)
Battery Info:	Not Applicable
Wireless Technology and Specs:	Not Applicable
Wireless Module Manufacturer:	Not Applicable
Wireless Module Number:	Not Applicable
Wireless Module FCC ID:	Not Applicable

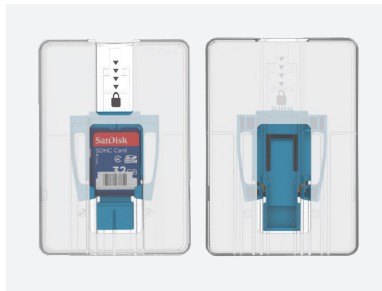
CRITICAL COMPONENTS LIST

ORDER CODE	DESCRIPTION	RATINGS/BATTERY INFO	WIRELESS SPEC & TECH
DDS101	Secure Sleeve – CF Drive	Not Applicable	Not Applicable
DDS201	Secure Sleeve – SD Cards	Not Applicable	Not Applicable
DDS301	Secure Sleeve – USB Drive	Not Applicable	Not Applicable

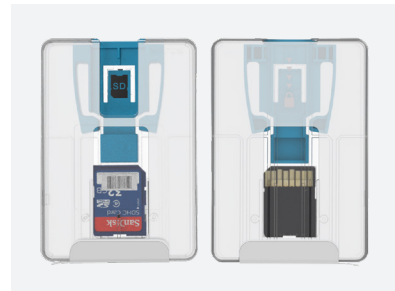
VARIANT PHOTOS



Secure Sleeve with No Media



Secure Sleeve with Used Media



Secure Sleeve with New Media



USB Sleeve Accessible



USB Sleeve Not Accessible

MARKETS SERVED

- US/Canada/EU
Mexico
- UK
- Japan
Korea
- Australia/NZ
China
- Hong Kong

- India
- Indonesia
Malaysia
- Singapore
Philippines
- Thailand
- Taiwan
- Vietnam

- Argentina
- Brazil
- Chile
- Colombia
- Panama
- Peru
- Israel
- Kuwait

- Qatar
- EAEU/Russia
- Saudi Arabia
- Bahrain
- UAE
- South Africa

We, InVue Security Products declare under our sole responsibility that the above mentioned object(s) conform to the stated standard(s) and therefore complies with the essential requirements of the stated Directives(s).

